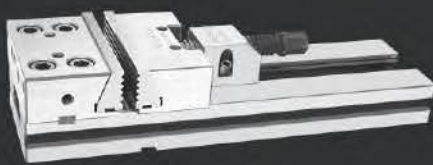


UNIQUE

XTRA TUFF VICES



PRODUCT CATALOGUE

UNIQUE PROCESS MAKES THE **UNIQUE** VICES PRECISION AND STURDY

Dear **UNIQUE** Friends

UNIQUE a name founded way back in 1970, has grown from a small family run company to one of the Country's leading manufacturer of various type of Vices.

The Secret of it's success is the uncompromising business standards of it's management, the company's Unrelenting focus on quality and your kind patronage.

This has generated added confidence in it's patrons and helped "UNIQUE" to grow fast. It is on this foundation that "UNIQUE" reputation for excellence has built an image and won appreciable response from the overseas market, which is another feather in it's cap.

Now I feel pleasure in presenting this Catalogue, which shall help you to boost your Sales for mutual benefits.

With Love

Your's Sincerely



Mr. H.H. Ahluwalia.



S-225A

**COMBINATION OPEN & RING END SPANNER
COLD STAMPED / ELLIPTICAL PATTERN / ANTI SKID**

- Chrome Vanadium Steel
- Hardened and Tempered
- Chrome Plated

MM	SIZE		LENGTH MM	Net Wt. Kgs.
	INCH			
6	1/4		100	0.018
7	9/32		110	0.022
8	5/16		120	0.026
9			130	0.030
10	3/8		140	0.042
11	7/16		150	0.052
12			160	0.060
13	1/2		170	0.072
14	9/16		180	0.086
15	19/32		190	0.092
16	5/8		200	0.109
17	11/16		210	0.132
18			220	0.152
19	3/4		230	0.160
20	25/32		240	0.182
21	13/16		250	0.192
22	7/8		260	0.210
23			270	0.250
24	15/16		280	0.260
25	1		290	0.300
26			300	0.320
27	1-1/16		310	0.390
28			320	0.435
29	1-1/8		330	0.460
30	1-3/16		340	0.460
32	1-1/4		360	0.560

METRIC SIZES SETS

No. of Pcs./ Set	SIZE MM	Net Wt. Kgs.
6	8, 10, 12, 13, 14, 17	0.418
7	8, 10, 12, 14, 17, 19	0.578
8	6, 7, 8, 9, 10, 14, 17, 19	0.516
8	8-11, 13, 14, 17, 19	0.600
11	8-14, 17, 19, 22, 24	1.130
12	6-14, 17, 19, 22	0.910
14	8-17, 19, 21, 22, 24	1.523
14	8-14, 17, 19, 22, 24, 27, 30, 32	2.540
25	6-28, 30, 32	4.612
26	6-32 (All Sizes)	5.072



COLD STAMPED

ANTI SKID

ELLIPTICAL PATTERN



S-225B

COMBINATION RAISED PANEL (CARBON STEEL)

- Chrome Vanadium Steel
- Hardened and Tempered
- Chrome Plated

MM	SIZE		LENGTH MM	Net Wt. Kgs.
	MM	INCH		
6		1/4	96	0.016
7		9/32	98	0.020
8		5/16	109	0.028
9			115	0.030
10		3/8	126	0.040
11		7/16	132	0.043
12			138	0.054
13		1/2	145	0.065
14		9/16	163	0.080
15		19/32	174	0.090
16		5/8	184	0.100
17		11/16	205	0.135
18			205	0.140
19		3/4	231	0.160
20		25/32	231	0.165
21		13/16	258	0.205
22		7/8	288	0.215
23			289	0.220
24		15/16	313	0.285
25		1	323	0.290
26			323	0.300
27		1-1/16	360	0.380
28			368	0.385
30		1-3/16	380	0.510
32		1-1/4	390	0.605

METRIC SIZES SETS

No. of Pcs./ Set	SIZE MM	Net Wt. Kgs.
6	8, 10, 12, 13, 14, 17	0.402
7	8, 10, 12, 14, 17, 19	0.497
8	6, 8, 10, 12, 13, 14, 17, 19	0.578
8	8-11, 13, 14, 17, 19	0.581
11	6-14, 17, 19, 22	0.671
11	8-14, 17, 19, 22, 24	1.135
12	6-14, 30, 32	0.886
14	8-17, 19, 21, 22, 24	1.530
14	8-14, 17, 19, 22, 24, 27, 30, 32	2.630



S-225C

DOUBLE OPEN END SPANNER COLD STAMPED / ELLIPTICAL PATTERN / ANTI SKID

- Chrome Vanadium Steel
- Hardened and Tempered
- Chrome Plated

MM	SIZE	LENGTH MM	Net Wt. Kgs.
	INCH		
6 x 7		122	0.024
8 x 9		140	0.032
10 x 11	1/4 x 5/16	156	0.055
12 x 13		172	0.076
14 x 15		190	0.112
16 x 17	9/16 x 5/8	204	0.130
18 x 19	19/32 x 11/16	223	0.165
20 x 22	11/16 x 3/4	236	0.210
21 x 23	3/4 x 25/32	250	0.240
24 x 27		265	0.315
25 x 28		280	0.360
30 x 32	1.3/16 x 1.1/4	302	0.485

METRIC SIZES SETS

No. of Pcs./ Set	SIZE MM	Net Wt. Kgs.
6	6x7,8x9,10x11,12x13, 14x15,16x17	0.429
8	6x7,8x9,10x11,12x13, 14x15,16x17,18x19,20x22	0.804
12	6x7 to 30x32	2.204



COLD STAMPED

ANTI SKID

ELLIPTICAL PATTERN



S-225D

BI-HEXAGONAL RING END SPANNER COLD STAMPED / ELLIPTICAL PATTERN / ANTI SKID

- Chrome Vanadium Steel
- Hardened and Tempered
- Chrome Plated

SIZE	LENGTH		Net Wt. Kgs.
	MM	INCH	
6 x 7		165	0.050
8 x 9		180	0.070
10 x 11	1/4 x 5/16	195	0.090
12 x 13		216	0.125
14 x 15		239	0.150
16 x 17	9/16 x 5/8	262	0.170
18 x 19	19/32 x 11/16	320	0.210
20 x 22	11/16 x 3/4	320	0.305
21 x 23	3/4 x 25/32	325	0.325
24 x 27		337	0.395
25 x 28		346	0.425
30 x 32	1.3/16 x 1.1/4	360	0.560

METRIC SIZES SETS

No. of Pcs./ Set	SIZE MM	Net Wt. Kgs.
6	6x7,8x9,10x11,12x13, 14x15,16x17	0.429
8	6x7,8x9,10x11,12x13, 14x15,16x17,18x19,20x22	0.804
12	6x7 to 30x32	2.204



ELLIPTICAL PATTERN

ANTI SKID

COLD STAMPED





STW-121

ADJUSTABLE CLICK TYPE TORQUE WRENCHES "STW" SERIES

The Sniper Torque Wrenches are used to precisely set the torque of a fastener such as a nut or bolt. A Torque Wrench is used where the tightness of screws and bolts is crucial. It allows the operator to measure the torque (rotational force) applied to the bolt so it can be matched to the specification. This permits proper tension and loading of all parts.

Model No.	TORQUE RANGE						SQ. DRIVE
	lb.ft.		N.M.		Kgf. Mts.		
	Range	LC	Range	LC	Range	LC	
STW-100	2-10	0.5	3-14	0.5	0.3-1.4	0.1	3/8"
STW-300	5-25	1	5-35	2	0.5-3.5	0.2	3/8"
STW-600	10-50	2	14-68	2	1-7	0.2	1/2"
STW-1200	20-100	2	25-135	5	3-14	0.5	1/2"
STW-2000	40-160	5	50-220	5	5-23	1	1/2"
STW-3000	50-250	5	70-340	10	7-35	1	1/2"
STW-5000	100-400	10	135-540	15	14-56	1	3/4"
STW-6000	100-500	10	135-675	15	14-70	2	3/4"
STW-7200	150-600	10	200-815	15	20-84	2	3/4"
STW-8400	350-750	20	475-1015	20	49-105	2	3/4"
STW-8400 A	350-750	20	475-1015	20	49-105	2	1"
STW-12300	400-1000	20	540-1380	40	55-140	5	1"
STW-15300	750-1400	25	1000-1900	50	105-195	5	1"
STW-24000	1000-2000	50	1350-2700	50	135-275	5	1"

All Sniper Torque Wrenches are calibrated on Mechanical Torque Tester to an accuracy of $\pm 5\%$ as laid down in IS 7145-1973. The Torque Tester Calibrated by force proving instrument and the Force Proving Instrument is certified by 'NPL' New Delhi.

The Sniper Torque Wrenches are warranted against any manufacturing defects.

The Ratcheting Model Torque Wrenches & Production Torque Wrenches can also be supplied against specific order

$$\begin{aligned} \text{Lbf.Ft} & \times 12 = \text{Lbf.in} \\ \text{Kgf.m.} & \times 100 = \text{Kgf.cm.} \end{aligned}$$

STW-122

HAND TORQUE MULTIPLIERS

Model		Torque Capacity		Bolt Capacity		Factor	Female Input Sq.in.	Male Output Sq.in.	RECMD. Torque Wrench
Plain Type	Handle Type	Lb.ft.	Kgm.	In.	mm				
STW-1	STWH-1	1250	170	1.1/8	28	5	1/2	3/4	TQTR-3000
STW-2	STWH-2	1250	170	1.1/8	28	5	3/4	1	TQTR-3000
STW-2/25	STWH-2/25	1250	170	1.1/8	28	25	1/2	1	TQTR-1200
STW-5	STWH-5	2000	275	1.3/8	35	5	3/4	1	TQTR-5000
STW-5/25*	STWH-5/25	2000	275	1.3/8	35	25	1/2	1	TQTR-1200
STW-6	-	2500	345	1.1/2	38	5	3/4	1.1/2	TQTR-7200
STW-6/25*	-	2500	345	1.1/2	38	25	1/2	1.1/2	TQTR-1200
STW-7	-	4500	622	2.1/2	62	5	3/4	1.1/2	TQTR-1500
STW-7/25*	-	4500	622	2.1/2	62	25	3/4	1.1/2	TQTR-3000
STW-7/25SD	-	4500	622	2.1/2	62	25	3/4	1.1/2	TQTR-3000
STW-7/125*	-	4500	622	2.1/2	62	125	1/2	1.1/2	TQTR-600
STW-7/125SD*	-	4500	622	2.1/2	62	125	1/2	1.1/2	TQTR-600
STW-9/25*	-	7000	968	3.0	75	25	3/4	1.1/2	TQTR-7200
STW-9/125	-	7000	968	3.0	75	125	1/2	1.1/2	TQTR-1200
STW-11/25*	-	12500	1734	3.1/2	89	25	3/4	2.1/2	TQTR-12300
STW-11/125*	-	12500	1734	3.1/2	89	125	1/2	2.1/2	TQTR-2000
STW-13/125*	-	35000	4845	4.1/2	114	125	3/4	2.1/2	TQTR-5000

NOTE : (*) are fitted with anti-wind-up ratchet mechanism.



Torque Wrench Ratchet Type-New Model.



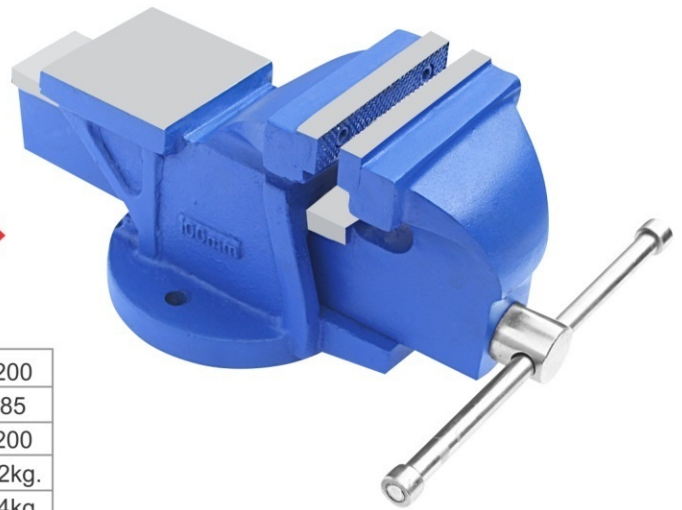
Model No.	Square Drive	Range N.M	Least Count	Range Lbf. Ft	Least Count	Head Width	Head Depth	Weight Per Pc. (KGS)	Approx. OAL at min cap.
STW-100	1/2"	10-100	0.50	9.25- 75.85	0.37	44 mm	42 mm	1.10	400 mm
STW-200	1/2"	40-200	1.00	33.3-151.7	0.74	44 mm	42 mm	1.25	470 mm
STW-300	1/2"	60-300	1.00	48.1- 225.7	0.74	44 mm	42 mm	1.40	550 mm
STW-400	3/4"	80-400	1.00	62.9- 299.7	0.74	48 mm	50 mm	1.80	670 mm



S-131

BENCH VICE WITH BROAD ANVIL (Unbreakable Steel Body)

- ALL VICES WILL BE POWDER COATED (PAINT)
- SPINDLE OF VICE MATERIAL IS EN-8
- FULLY -CHROMED SPINDLE
- HARDENED JAW PLATES
- ALL SCREW & BOLTS WILL BE OF 8.8 MATERIAL



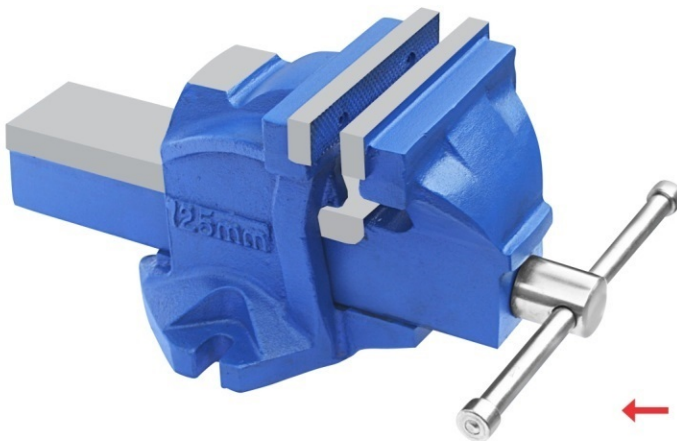
SPECIFICATIONS

Nominal Size in mm	75	100	125	150	200
Depth of jaws in mm	50	60	75	75	85
Opening Jaws in mm	75	100	125	150	200
Weight Approx. Fixed Base	5kg.	8kg.	12kg.	14kg.	22kg.
Weight Approx. Swivel Base	5.5kg.	8.5kg.	13kg.	15kg.	24kg.

S-132

RECORD TYPE BENCH VICE WITH ANVIL (Unbreakable Steel Body)

- ALL VICES WILL BE POWDER COATED (PAINT)
- SPINDLE OF VICE MATERIAL IS EN-8
- FULLY -CHROMED SPINDLE
- HARDENED JAW PLATES
- ALL SCREW & BOLTS WILL BE OF 8.8 MATERIAL



SPECIFICATIONS

Nominal Size in mm	100	125	150	200
Depth of jaws in mm	65	75	80	95
Opening Jaws in mm	100	125	150	200
Weight Approx. Fixed Base	7.700kg.	12kg.	14kg.	20.500kg.

S-133

TAIWAN TYPE TAPER SLIDE BENCH VICE (Unbreakable Steel Body)

- WITH GUIDE ADJUSTING SCREWS
- SPINDLE OF VICE MATERIAL IS EN-8
- FULLY -CHROMED SPINDLE
- HARDENED JAW PLATES
- ALL SCREW & BOLTS WILL BE OF 8.8 MATERIAL

SPECIFICATIONS

Nominal Size in mm	100	125	150	200
Depth of jaws in mm	75	80	85	90
Opening Jaws in mm	100	125	150	200
Weight Approx. Fixed Base	7.500 kg.	11 kg.	15 kg.	19 kg.
Weight Approx. Swivel Base	8.500kg.	12kg.	16kg.	20.500kg.



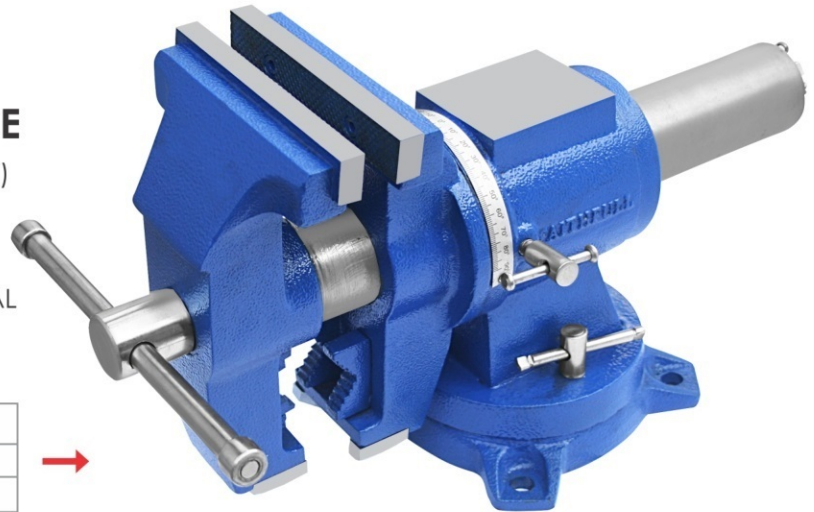
S-134

MULTI - PURPOSE BENCH VICE

- ALL VICES WILL BE POWDER COATED (PAINT)
- SPINDLE OF VICE MATERIAL IS EN-8
- FULLY -CHROMED SPINDLE
- HARDENED JAW PLATES
- ALL SCREW & BOLTS WILL BE OF 8.8 MATERIAL

SPECIFICATIONS Swivel Base

Nominal Size in mm	100	125	150
Depth of jaws in mm	75	80	85
Opening Jaws in mm	100	125	150
Weight Approx. Swivel Base	15 kg.	18.5 kg.	23.5 kg.



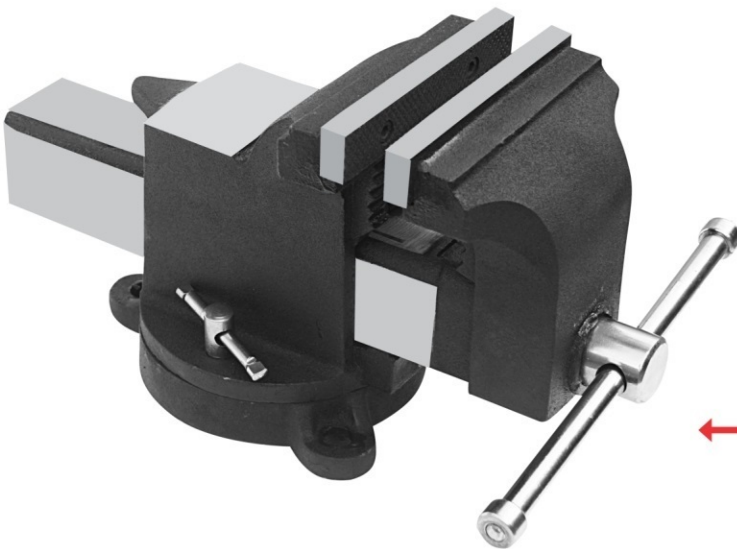
S-135

STANLEY TYPE BENCH VICE SWIVEL BASE (Unbreakable Steel Body)

- ALL VICES WILL BE POWDER COATED (PAINT)
- SPINDLE OF VICE MATERIAL IS EN-8
- FULLY -CHROMED SPINDLE
- HARDENED JAW PLATES
- ALL SCREW & BOLTS WILL BE OF 8.8 MATERIAL

SPECIFICATIONS Swivel Base

Nominal Size in mm	100	150
Depth of jaws in mm	65	75
Opening Jaws in mm	100	150
Weight Approx. Swivel Base	7.700kg.	14kg.



S-136

ALL STEEL BENCH VICE FIXED BASE & SWIVEL BASE

- Unbreakable Steel Body
- ALL VICES WILL BE POWDER COATED (PAINT)
- SPINDLE OF VICE MATERIAL IS EN-8
- FULLY -CHROMED SPINDLE
- HARDENED JAW PLATES
- ALL SCREW & BOLTS WILL BE OF 8.8 MATERIAL

SPECIFICATIONS

Nominal Size in mm	75	100	125	150	200
Opening Jaws in mm	75	100	125	150	200
Weight Approx. Fixed Base	3.5kg.	4kg.	5kg.	6kg.	11kg.
Weight Approx. Swivel Base	4kg.	4.5kg.	5.5kg.	6.5kg.	12kg.





UNIQUE IMPEX

142- INDUSTRIAL POINT,
BULANDPUR ROAD
GADAIPUR, JALANDHAR -144004
(PUNJAB) INDIA

PH.: +91-181-2600057,2600058

Email : uniqueimpexindia1@gmail.com